



LAND FOR SALE OF 1,377 M2 ON ESCÉNICA WITH  
VIEWS OF PLAYA DIAMANTE, WITH STRUCTURE  
FOR 22 APARTMENTS IN BRISAS MARQUES

Land: 1377 m2

\$ 20,000,000.00 MXN

\$ 1,023,133.04 USD

## Amenities

Extras  
Land for developers

## Property details

Lot for sale of 1377 m2 in Fracc. Brisas Marques, going down the Escénica towards Puerto Marques, with an excellent view of Playa Diamante, the bay of Puerto Marques, Punta Diamante and even the Tres Palos lagoon.

Descending, residential or single-family, it currently has a structure to build twenty-two apartments

The land has the following boundaries:

To the North with 44 meters adjacent to the Scenic Highway

To the South with 26.28 meters adjacent to a neighboring lot

To the East with 36 meters adjacent to a neighboring lot

To the west with 46 meters adjacent to the neighboring lot

Sales and rentals  
+52 744 107 4026  
+52 744 446 7080

House remodeling  
+52 744 224 9669

Whatsapp attention  
+52 744 107 4026



# Facade



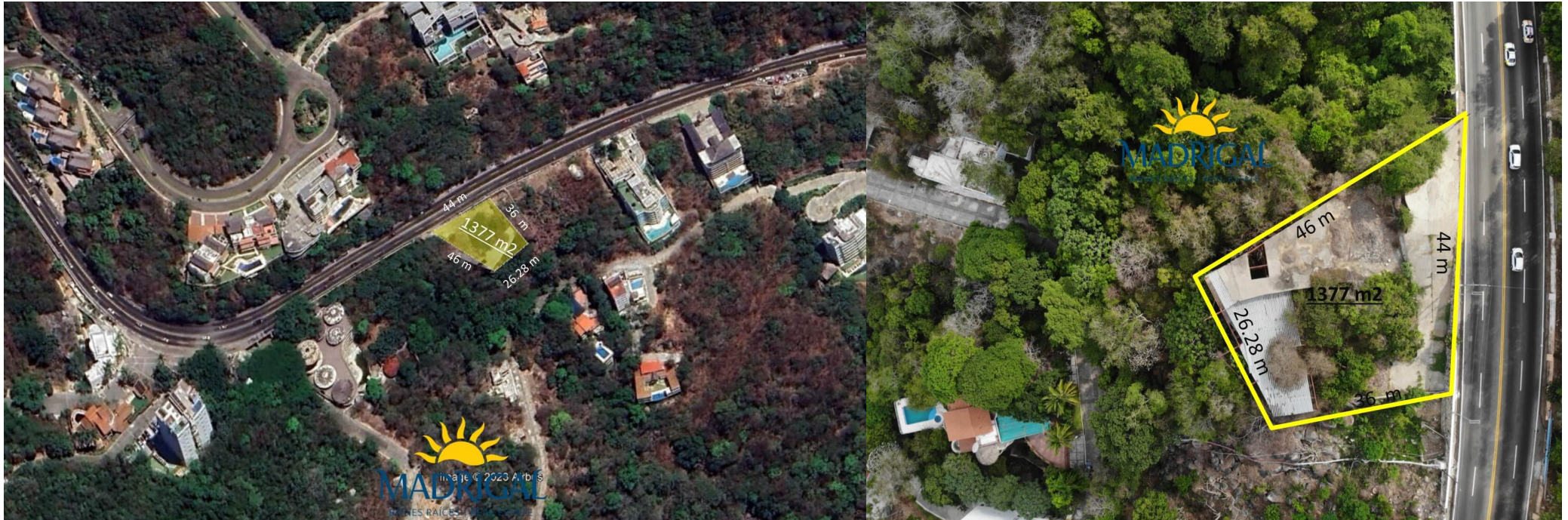
Sales and rentals  
+52 744 107 4026  
+52 744 446 7080

House remodeling  
+52 744 224 9669

Whatsapp attention  
+52 744 107 4026



# Plans



Sales and rentals  
+52 744 107 4026  
+52 744 446 7080

House remodeling  
+52 744 224 9669

Whatsapp attention  
+52 744 107 4026



## Views



Sales and rentals  
+52 744 107 4026  
+52 744 446 7080

House remodeling  
+52 744 224 9669

Whatsapp attention  
+52 744 107 4026